

**Limekiln PCE HSCA Site  
Horsham Township  
Montgomery County, PA**

**Summary of Private Well Supply Sample Results\***

**Prepared by Carly Baker  
Project Officer, HSCA, DEP-SERO**

<b>Pages</b>	<b>Contents</b>
<b>1</b>	<b>Table of chemicals, abbreviations and Medium Specific Concentrations (MSCs)</b>
<b>2-4</b>	<b>Summary of residential well results June 2011-June 2012</b>
<b>5</b>	<b>Well Location Map (Current as of July 27, 2012)</b>

\*Full copies of lab results are available for review in the PADEP Southeast Regional Office at  
2 East Main Street, Norristown, PA 19401

**Table of Chemicals, Abbreviations and Medium Specific Concentrations (MSCs)**

Chemical Name	Abbreviation or Alternate name	Medium Specific Concentration (MSC)
Tetrachloroethylene	PCE	5 µg/L
Trichloroethylene	TCE	5 µg/L
1,1-Dichloroethylene	1,1-DCE	7 µg/L
Methyl tert-butyl ether	MTBE	20 µg/L
Methyl Chloride	Chloromethane	30 µg/L
Cis-1,2-Dichloroethylene	Cis-1,2-DCE	70 µg/L
Chloroform	--	80 µg/L
1,1,1-Trichloroethane	1,1,1-TCA	200 µg/L

Gray cells indicate property not sampled at that time

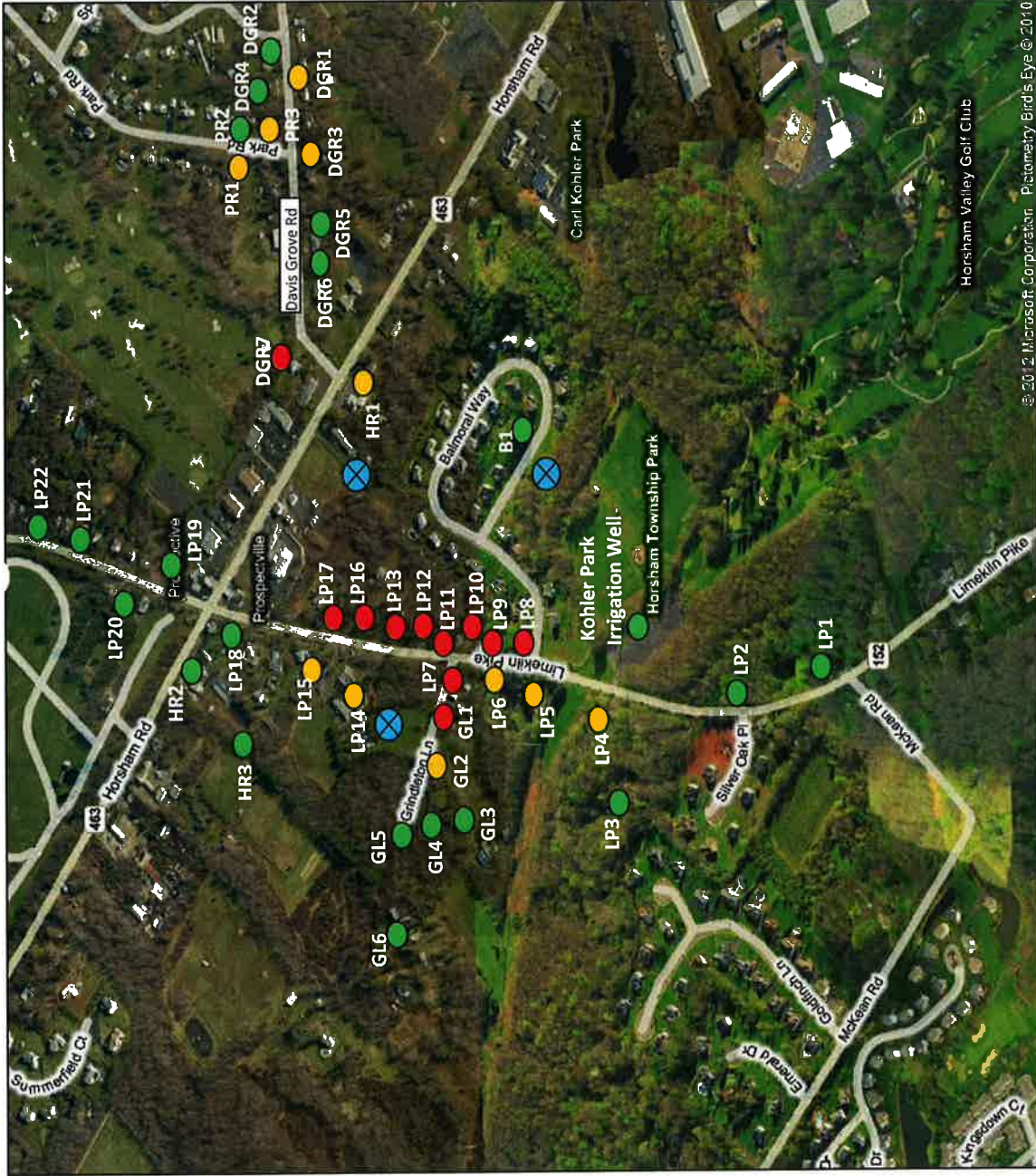
ND= no detections of any analytes

All units are in micrograms/liter (ug/L)

Location Code	Jun 2011	Aug 2011	Sep 2011	Oct/Nov 2011	Feb 2012	Apr/May 2012	Jun 2012
Kohler Park-irrigation well		ND		Chloromethane=1.88			Chloromethane= 0.279
LP1				ND			
LP2					ND		
LP3			ND				
LP4					PCE=0.252		
LP5		TCE=1.81		TCE=1.64	PCE=0.259 TCE=1.49		PCE= 0.335 TCE=1.41
LP6			ND		PCE=0.428 TCE= 0.298		
LP7		PCE=14		PCE= 7.96 TCE= 0.268	PCE=18.2		PCE=20.4
LP8				PCE=5.29 TCE= 0.700	PCE= 7.35 TCE= 0.786		PCE=7.26 TCE= 0.761
LP9			PCE=9.65	PCE=9.87	PCE=11.7		PCE= 13.5
LP10			PCE=9.76	PCE= 9.22	PCE=13.0		PCE= 12.1
LP11			PCE=11.7	PCE= 14.6	PCE=15.2		PCE= 15.4
LP12		PCE=25.2		PCE=30			PCE= 25.7
LP13	PCE=22.6	PCE=23.6		PCE=23.2	PCE=28.2		PCE= 24.7

Location Code	Jun 2011	Aug 2011	Sep 2011	Oct/Nov 2011	Feb 2012	Apr/May 2012	Jun 2012
LP14	PCE=0.559	PCE=0.503		PCE=0.639			
LP15	PCE=0.452						
LP16	PCE=41.6	PCE=29.6		PCE=71.5	PCE=57.3		PCE=44
LP17	PCE=8.03	PCE=9.4		PCE=6.92	PCE=7.39		PCE=7.24
LP18	MTBE=10.4			MTBE=8.31			
LP19				ND			
LP20			ND				
LP21							Chloromethane= 0.282
LP22						Chloroform=0.14 Private Sampling	
HR1						PCE= 1.3 Private Sampling	
HR2	ND			ND			
HR3			MTBE=3.67				
GL1		PCE=6.22 Chloroform=0.69		PCE= 6.56	PCE=11.6		PCE= 10.8
GL2		TCE=1.76		TCE=1.28			PCE=0.498 TCE= 1.18
GL3			ND				

Location Code	Jun 2011	Aug 2011	Sep 2011	Oct/Nov 2011	Jan/Feb 2012	Apr/May 2012	Jun 2012
GL4		ND					
GL5		MTBE=7.41					
GL6			ND				
DGR1							PCE= 1.82 1,1-DCE= 0.419
DGR2					ND		
DGR3							PCE= 0.345
DGR4					ND		
DGR5				TCE=0.428 cis-1,2-DCE= 0.354	TCE=0.605 cis-1,2-DCE= 0.537		
DGR6				ND			
DGR7			PCE=24.6	PCE=24.7	PCE=27.9		PCE=23.8
PR1							PCE= 2.55 1,1-DCE=3.17 1,1,1-TCA=0.370
PR2					ND		
PR3					PCE= 2.73 1,1-DCE= 2.56 1,1,1-TCA= 0.328		PCE= 2.64 1,1-DCE= 2.18 1,1,1-TCA= 0.265
B1					ND		



© 2012 Microsoft Corporation. Pictometry Bird's Eye © 2010

**LIMEKILN PCE HSCA SITE**  
PADEP-SERO  
Current as of July 27, 2012

● PCE > MCL

● PCE < MCL

● PCE = Not Detected

⊗ MW location

